


REGIONAL PLANNING FOR FOOD AND PUBLIC HEALTH

Yeeli Mui, PhD, MPH

Healthy Food Retail Working Group
June 18, 2019

CONTEXT

A wide-angle photograph of the University of Buffalo campus. In the background, a large, light-colored stone building with a prominent clock tower and a dome is visible under a blue sky with scattered white clouds. In the foreground, a paved path runs across a green lawn. Several people are riding bicycles along the path. A large tree with bright yellow autumn leaves stands in the middle ground, partially obscuring the building. The overall scene is bright and sunny.

UB Food Systems Planning and Healthy Communities Lab

engages in research that
critically examines the
**role of local
government policy** in
advancing equitable,
healthy, and sustainable
communities



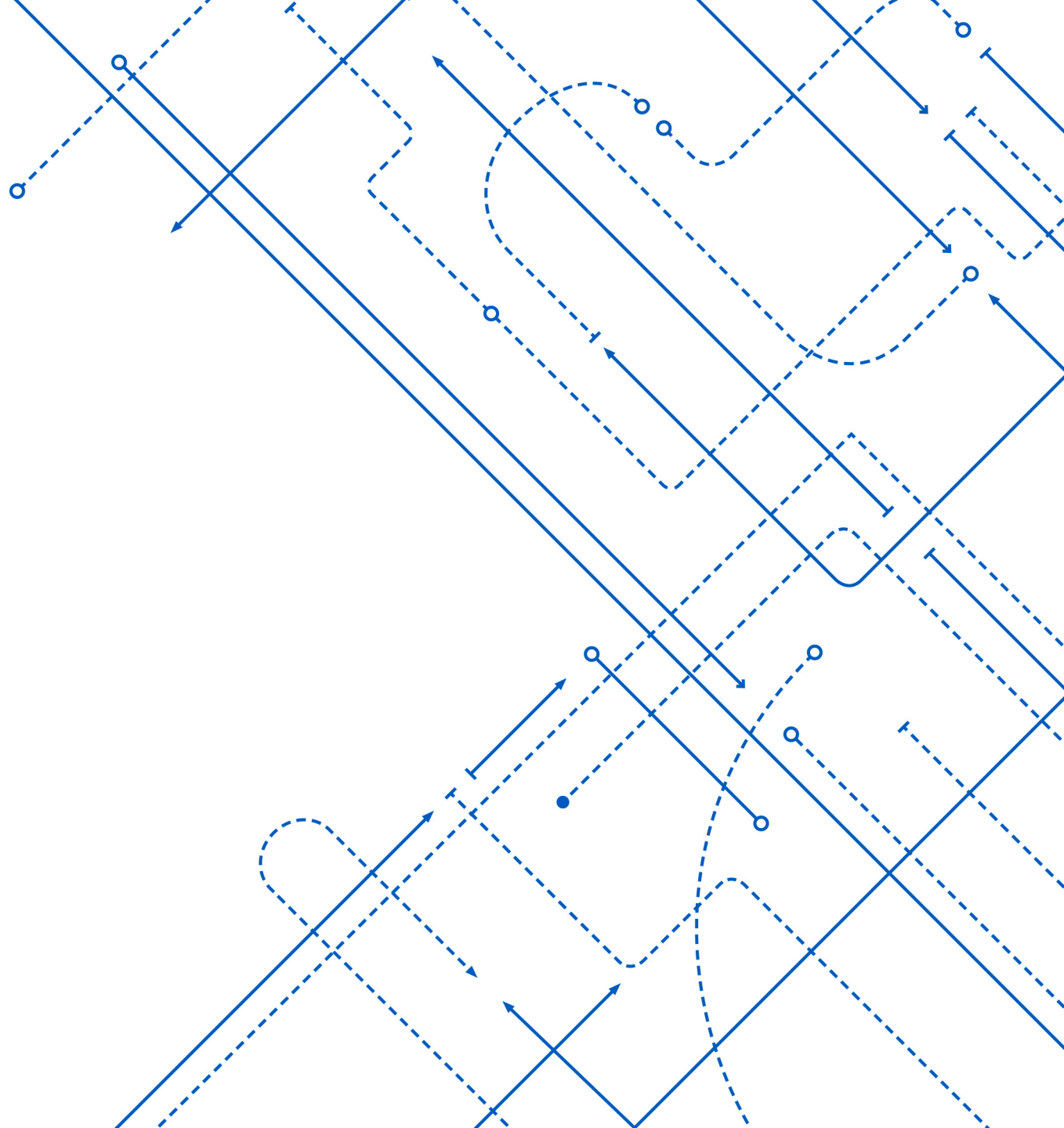
UB's Community for
Global Health Equity is
**transforming
global health**
in Buffalo and abroad

...

through

- research excellence
- innovative teaching
- strategic partnerships

RESEARCH

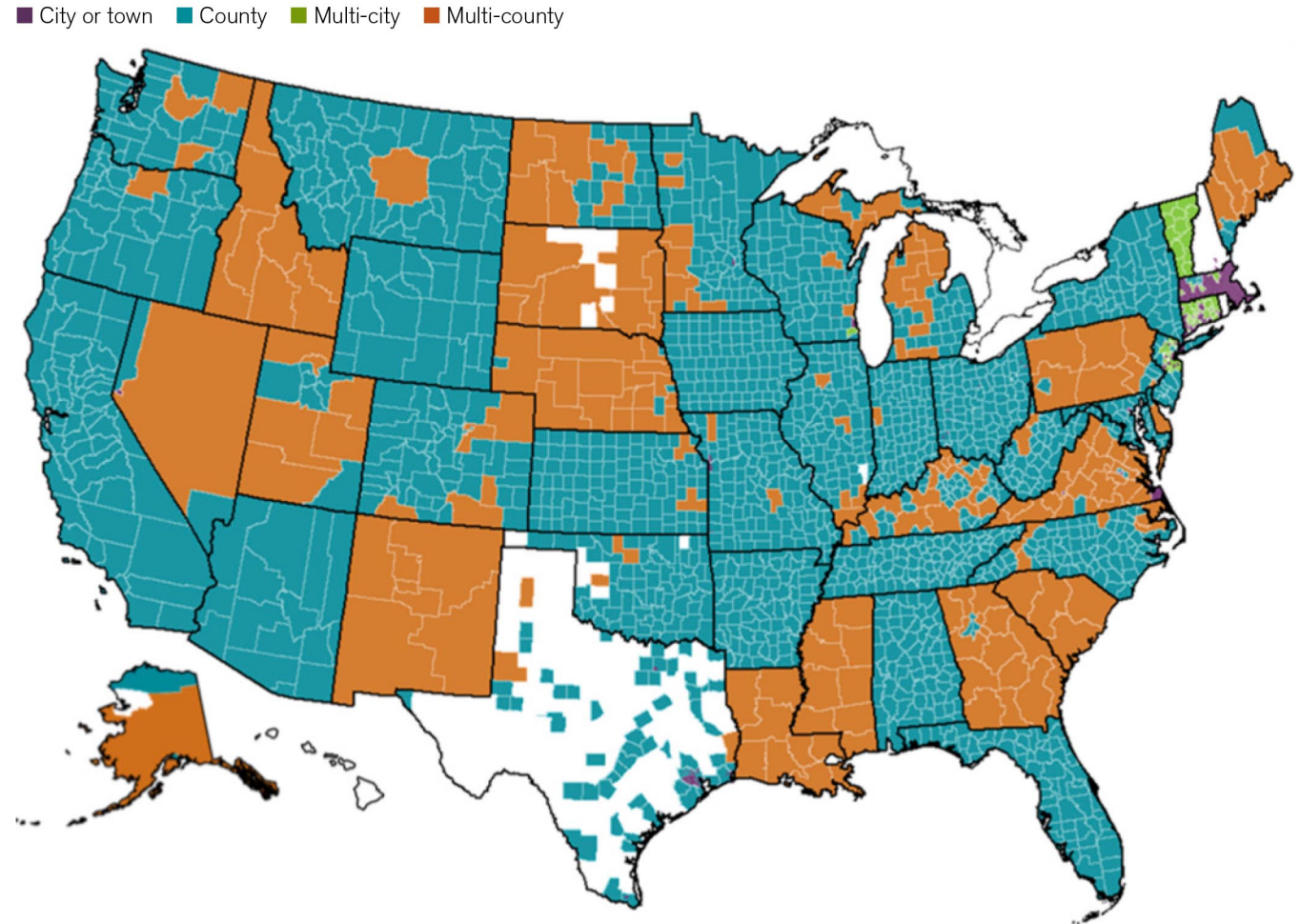


Regional planning and public health

40,000 local governments
(counties, municipalities,
townships) in the U.S.

2,800 local health departments

“Regional Planning in Relation to Public Health” at the American Public Health Association Annual Meeting, 1926



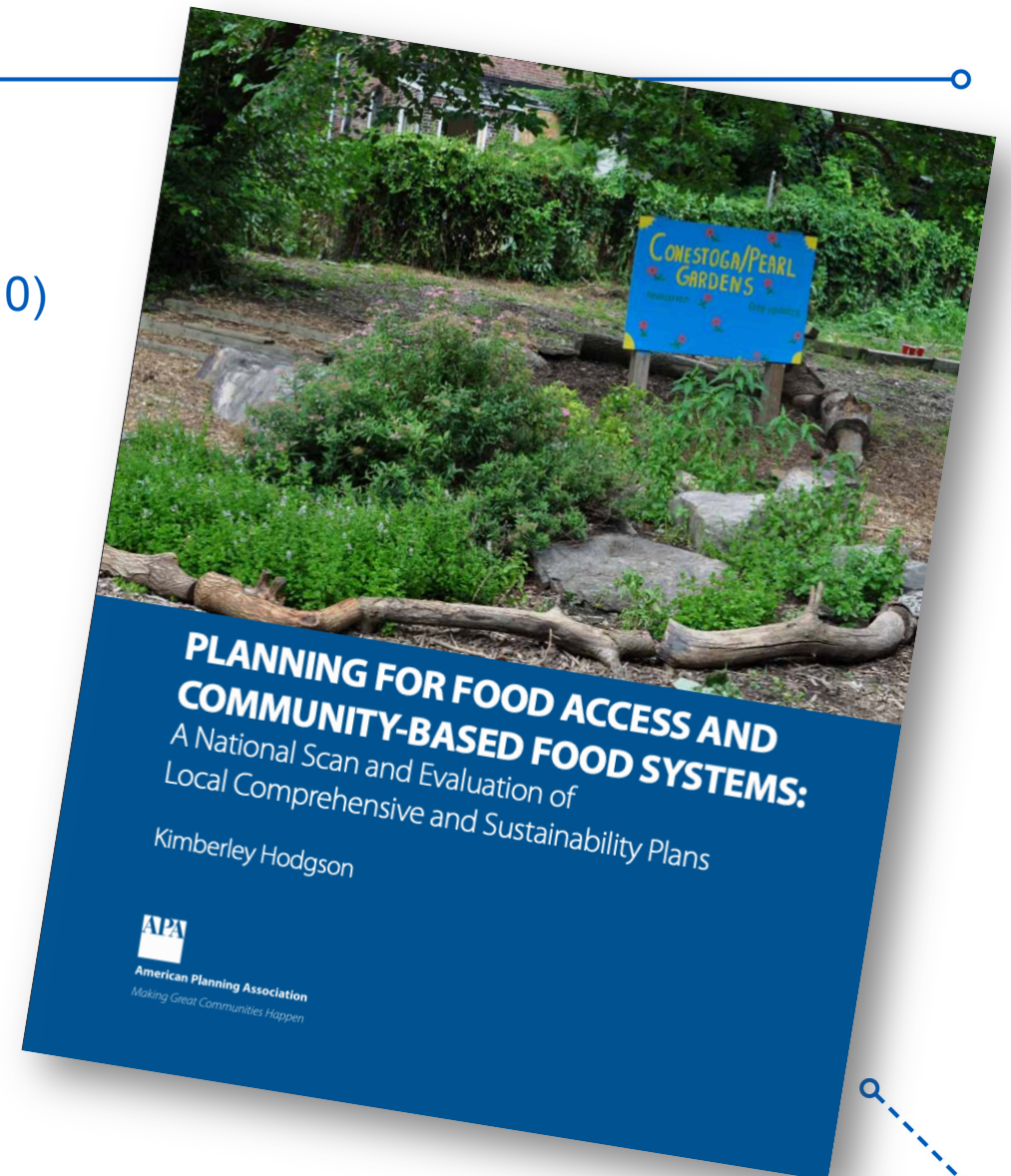
Source: National Association of County and City Health Officials (NACCHO) 2016 National Profile of Local Health Departments

Planning for food access in the U.S (2010)

Explicitly address the local/regional food system:

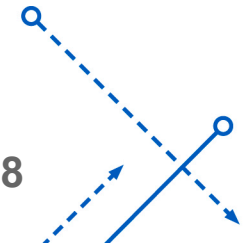
- 9% of comprehensive plans
- 18% of sustainability plans
- Top 5 food system topics: rural agriculture, food access and availability, urban agriculture, food retail, food waste
- Few plans explicitly call out inequities

Need for systematic evaluation to identify strengths and limitations in regional plans to address access to healthy food



Research Objectives

- To evaluate the extent to which adopted regional scale plans address healthy food access
- To examine how plans for future land use facilitate/inhibit equity in healthy food access



Methods | Content analysis evaluation instrument development

- Designed to evaluate plan components that represent an ideal healthy food access plan (### measures; score of 0, 1, or 2)

Methods | Content analysis evaluation instrument development

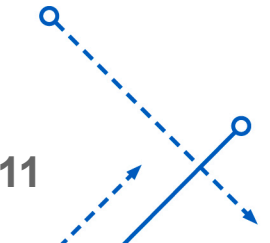
- Designed to evaluate plan components that represent an ideal healthy food access plan (#### measures; score of 0, 1, or 2)

	Nutrition	Affordability	Cultural preference	Sovereignty	Socially equitable	Spatially equitable
Vision, goals & objectives	i = #	i = #	i = #	i = #	i = #	i = #
Factual basis	i = #	i = #	i = #	i = #	i = #	i = #
Proposed implementation plans	i = #	i = #	i = #	i = #	i = #	i = #
Monitoring	i = #	i = #	i = #	i = #	i = #	i = #
Planning process	i = #	i = #	i = #	i = #	i = #	i = #

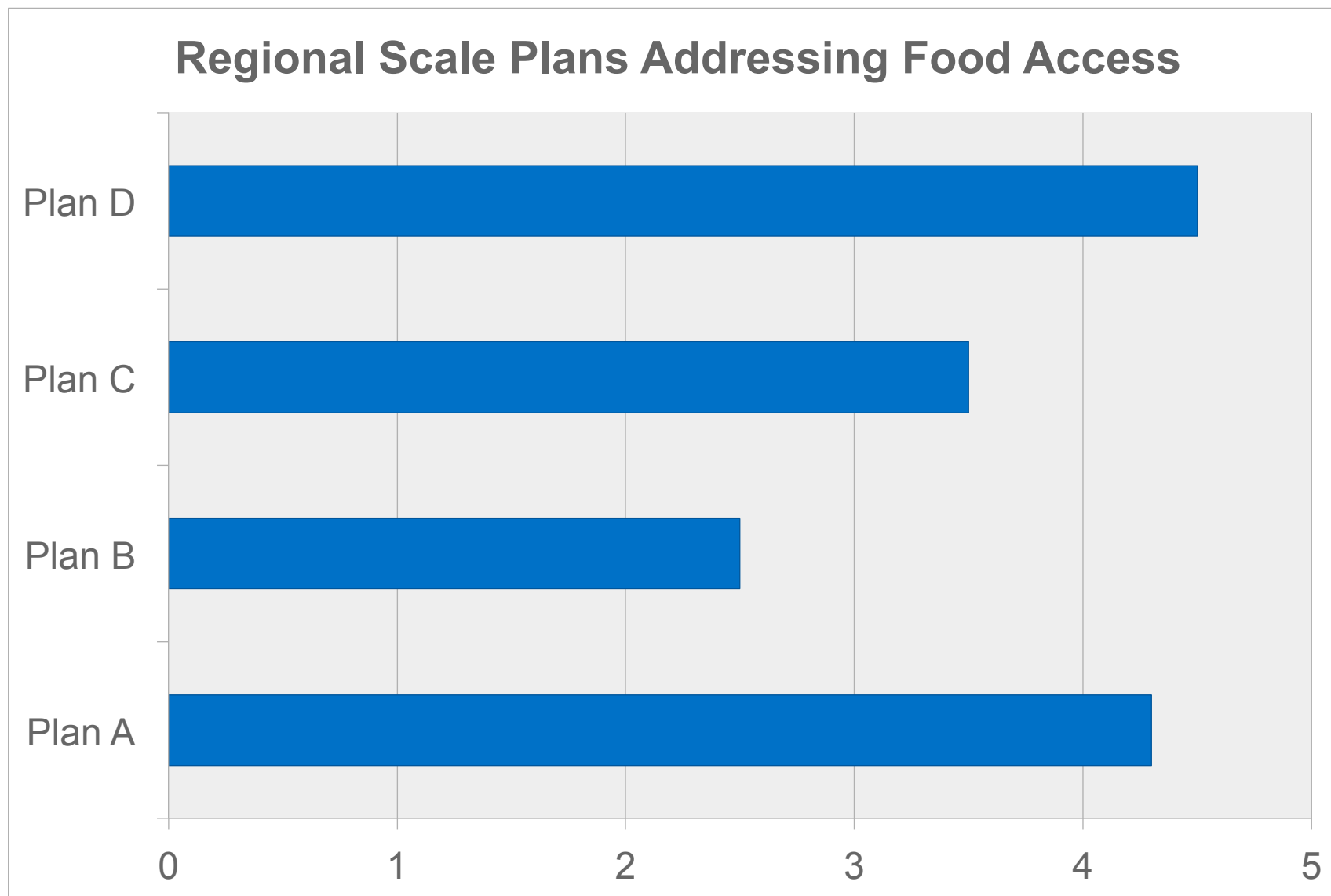
- Example: Does the plan describe a vision for a community free of racial/ethnic/social disparities in access to food?

Methods | Plan evaluation

- National search of regional plans
- Inclusion criteria
 - Endorsed or adopted by local government in the U.S., 2000 to 2008
 - Plans for future land use in the region
 - Plans for food
- Two coders and inter-rater test



Preliminary Results



Preliminary Results cont.

	Minimum score	Maximum score	Average score ¹
Total (n=##)			
Plan elements			
Vision, goals & objectives			
Factual basis			
Proposed implementation plans			
Monitoring			
Planning process			
Food access			
Nutrition			
Affordability			
Cultural preference			
Sovereignty			
Socially equitable			
Spatially equitable			

[Placeholder for highest scoring regional plan]



SAVE THE DATE
#ACSP2019

October 24-27, 2019
Greenville, South Carolina

HOSTED BY

CLEMSON

**CITY PLANNING AND
REAL ESTATE DEVELOPMENT**





THANK YOU

yeelimui@buffalo.edu